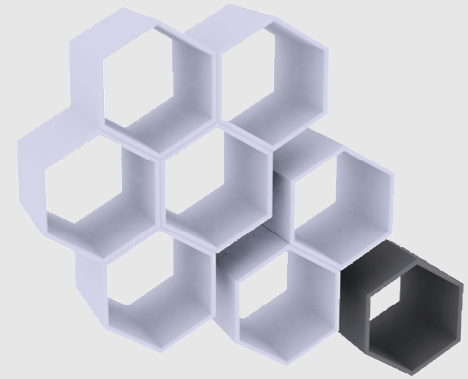


"The control tool for your tools"



toolware



All tools and measure instruments combined are a costly, yet necessary investment for your services or production process. Effective maintenance of all tools and instruments will reduce the operational cost and will reduce your level of investment.

Toolware is the application in which collective maintenance activity and essential data can be registered, such as maintenance planning, status, core and calibration data, user history.

The action driven character of Toolware and the collective use of the application are the basis for this indispensable link between all maintenance activities within your organization.



Good tools, prerequisite for your organization

Functional tools are indispensable for effectuation of most technical activities. Installations that require maintenance gain in complexity. The (quality) requirements are of a continuous high level, which requires for examined, calibrated tools. Apart from that, advanced tools are used to perform activities faster, or with less human intervention.

Business case

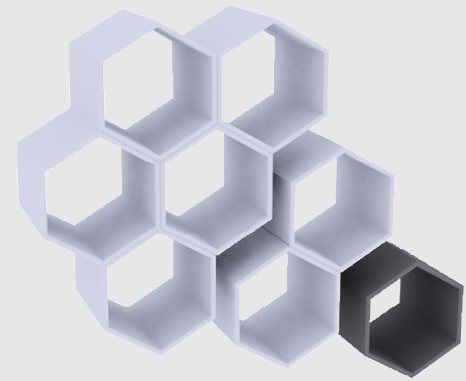
Good tools are not merely indispensable, they furthermore require necessary investments. An optimal effectuation of the tools at hand will reduce operational cost and will reduce investments. By having the information what is present, where it is present and providing the company with a decent planning, more can be done with fewer tools. Thus, an investment in Toolware will return on investment within a short period of time

Characteristics of good tool management

- Core data and user history are current and immediately available
- Insight in the status of all tools
- Calibration according to the current quality principles
- Planning of periodical maintenance activity
- Insight in intensity of use of all tools
- Clear task division in usage and maintenance

Core data and status of use

Having the information on availability of tools is a first step within any organization. This is foremost true in larger organizations, or in organizations that have various locations. Targeted maintenance and the assessment of investment requests require for proper insight in the available tools. In order to prevent unwanted use of tools, the status of any tool should be available at all times. This enhances reliability of work and possible downtime may be decreased or even avoided.



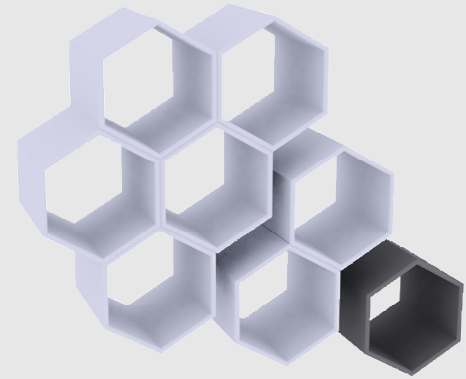
When calibration is required

In order to determine whether the appropriate (quality-) standards are met, calibrated tools and / or instruments are required. Let's take a look at quality standard, such as ISO 9001, which is a standard most organizations have to comply to. The status of each calibrated instrument should be known, just as the time at which the next calibration should be performed. In short, for all tools and instruments certain data have to be registered, which is virtually impossible without a proper database, even more so, taking into consideration that different calibrations are often performed per type. Specialised calibrations are often seconded, which provides for necessary extra organization.

Collective use

In most organizations, multiple employees will participate in use and maintenance of tools. This requires for communication and collective use of the data available. Multiple employees will – within the boundaries of their privileges – modify data that should in turn be accessible to others.

Specialised tools often have limited availability. The use of tools should be scheduled, in order for reliable continuance of company processes. An effective planning, means a more effective use of tools and, in the long run, less need for the specialised tools themselves.



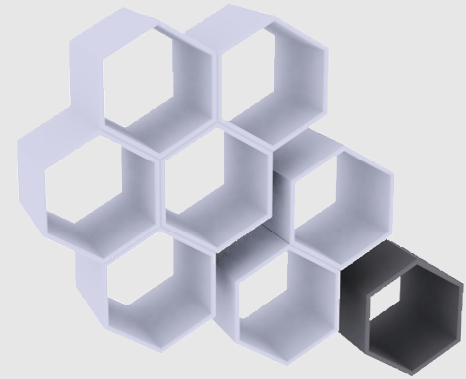
The power of Toolware

All tools or instruments will be registered within one database, together with core data, such as ID, serial number, family, set and unit, location, status and provider. Apart from that there are fields available that can be freely and flexibly defined. For the purpose of maintenance, there is the possibility to register for each tool / instrument individually how maintenance and / or calibration should be performed: frequency, status, contact name, internal or external maintenance, measure points and their results and required actions. Depending on the privileges of the employee, he or she can enter data, assess data, or merely have the option to read data. Furthermore, all tools can be categorized in groups, which can be freely chosen.

For efficient use of all tools and instruments, an integral planning overview is available. This overview, which can be adjusted to the company's needs (per day, per week, etc.) will provide you with a quick and current overview of tools, and their required moment of calibration. For specific projects, reservation is possible, per tool, per set, or per unit.

Employees that have a specific task in maintenance, will have their 'own' designated tools, clear for everyone involved. They will automatically receive notification, before the maintenance date for a tool.

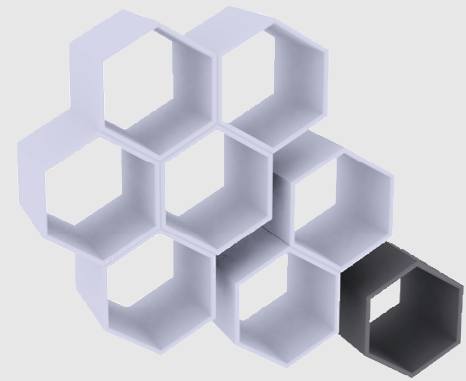
Especially when working tasks are spread over various locations, the power of Toolware will stand out. Toolware can be used in various locations at the same time. Employees that are often on the road, can have the same information on their own notebooks.



Tool	ID	Registration	Date Main-tenance	Main-tenance	Status	Set	Unit
Flow measurement							
High volume flow meter	FL 1		14-03-2004		Out of operation	Toolbox 21	Workshop
Low volume flow meter	FL 2		14-03-2004	23-03-2004	In operation		
Normal flow meter	FL 3		08-03-2004	15-03-2004	In operation		
Thermal mass flow meter	FM 001		24-01-2003	23-01-2004	In operation		
Vortex meter	VVM001	12345678901111	02-05-2003	30-04-2004	In operation		
Vortex meter	VVM-121		01-05-2003		Out of operation	Toolbox 22	Workshop
Level instrumentation							
Level sensor	S-4		24-01-2003	18-07-2003	In operation		
Level limit switch	L-33		24-01-2003	12-04-2004	In operation		
Level radar	LR 43		21-11-2002	15-05-2003	In operation		
Lifts							
2,5 ton 2 post hydraulic HL-25T2-1	HL		30-01-2002	29-01-2003	In operation		Workshop
2,5 ton electro hydraulic lift	HL 25-1		31-01-2002	30-01-2003	In operation		Cat cracker
4 ton 4 post lift	4Ta		23-01-2003		Unavailable		
Oldenburg							
Flow measurement							
Magnetic induction meter	HM 5		13-04-2003		Out of operation	Toolbox 22	VAN 22
Vortex meter	VVM-001		11-10-2002	10-10-2003	In operation	Toolbox 21	VAN 21
Vortex meter	VVM-001		05-08-2004	19-08-2005	In operation	Toolbox 22	VAN 22
Vortex meter	VVM-002		27-10-2002	16-10-2003	In operation	Toolbox 23	VAN 23

Key features Toolware:

- Centralised overview of all tools, including (core-) data, status, etc
- Decentralised entry and follow-up of mutations
- Current planning and reservation available online
- All calibration data and reports within one database
- Different access privileges for different maintenance activities
- Automatic notification of new actions through e-mail



Toolware: part of the 'ware'-concept

The success of any organization is largely determined by the availability of current company information and experiences of employees. This supports organizations in their road to success and in the drive to compete.. Toolware as one of the Metaware applications fits within this concept. Apart from Toolware, Metaware offers various other solutions with products such as Isoware (documentmanagement) or Biware (call management). The various modules fit within an integrated quality and document management system, the so-called Quality Suite.

More than software: the organization is the key

Our years of experience in realising solutions for quality management systems, supports our idea that the organization itself is the key to successful implementation of our products, both our standard applications and our custom-made applications. For maximum results in the interaction between software and organization, Metaware has developed a convenient pilot method. Over a short period of time, an organization can get acquainted with the available solution. Its use is then limited to a select group of users, who can implement the company's methods within the application. After the application has proven its worth, the application can then be implemented further in the organization.

Lotus Notes / Domino

Toolware exploits the power of Lotus Notes / Domino, the world's standard for all your intranet solutions.

System requirements

Server

Operating system (among others): Microsoft Windows 2000 / 2003, Linux

Software: Lotus Domino 6.5+

Mailsysteem: Lotus Notes 6.5+ / Outlook 2000+

Hardware: recommended 512 Mb+ internal memory, 3 Gb+ disk space (depending on o.s.)

Client

Operating system (among others): Microsoft Windows 2000, XP, Vista

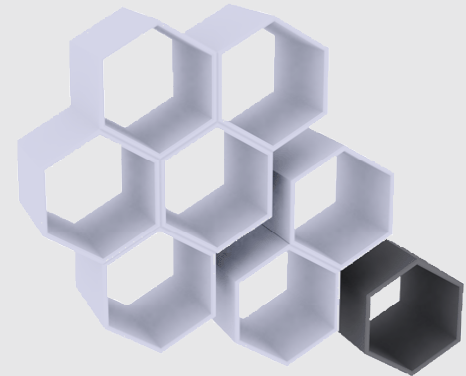
Software: Lotus Notes 6.5+, Microsoft Internet Explorer 6.0+, MS Office 2000+

Hardware: recommended 512 Mb+ internal memory, 512 Mb+ disk space (depending on o.s.), display resolution 1024 x 768

How to proceed?

For further information you can go to the Internet site www.metaware.nl. Here you can download demonstration software or start with an on-line demo.

For further information or a live demonstration, please contact us at ph. +31 (0)50 537 00 80.



Metaware B.V.
Rijksstraatweg 239
9752 CB Haren (Gn)

T: +31(0) 50 537 00 80
F: +31(0) 50 537 00 81
E: info@metaware.nl

www.metaware.nl

toolware